

Uploading to your Virtual Hosting website via ftp

Find answers to questions about your Virtual Hosting account [here](#).

All of our [Virtual Hosting](#) accounts can be accessed using an FTP client program. Following are some instructions on how to upload your site to our servers. The example images are taken from WS\_FTP, but the same settings and methods will apply to all FTP client programs.

**Enter the following information to log in to your space:**

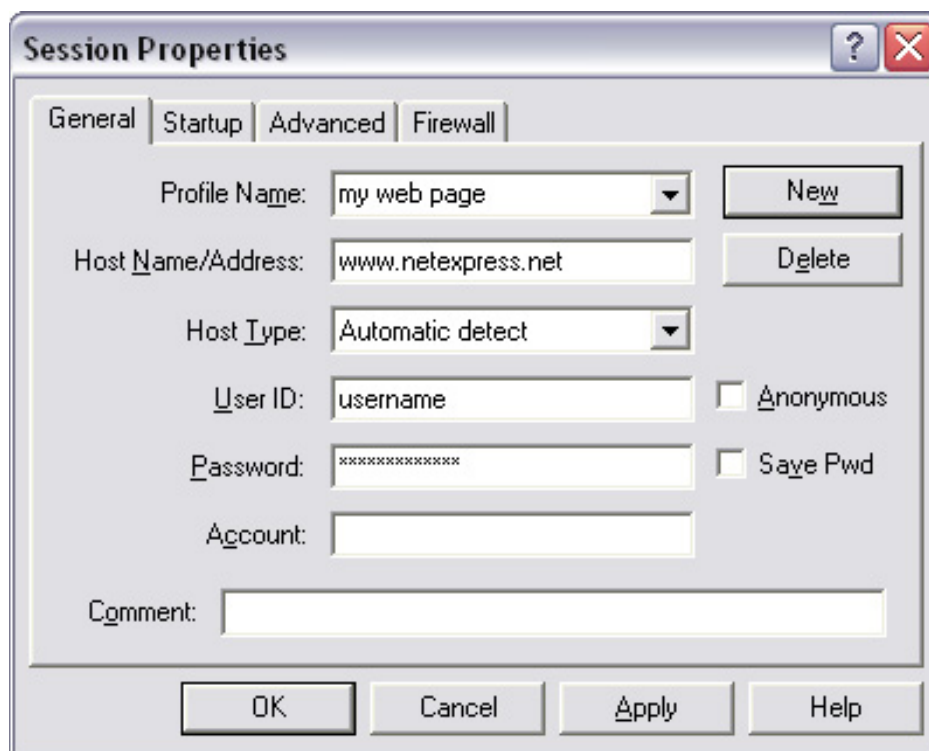
**Host/server name:** *www.yourdomain.com (example: www.netexpress.net)*

**username/login name:** *username from your virtual host packet*

**\*\*\*If you are hosted on one of our Windows servers, you will need to include "MATRIX\" ahead of your username (example: MATRIX\johndoe-web). If you are hosted on any of our other servers, use only your username (example: johndoe-web).**

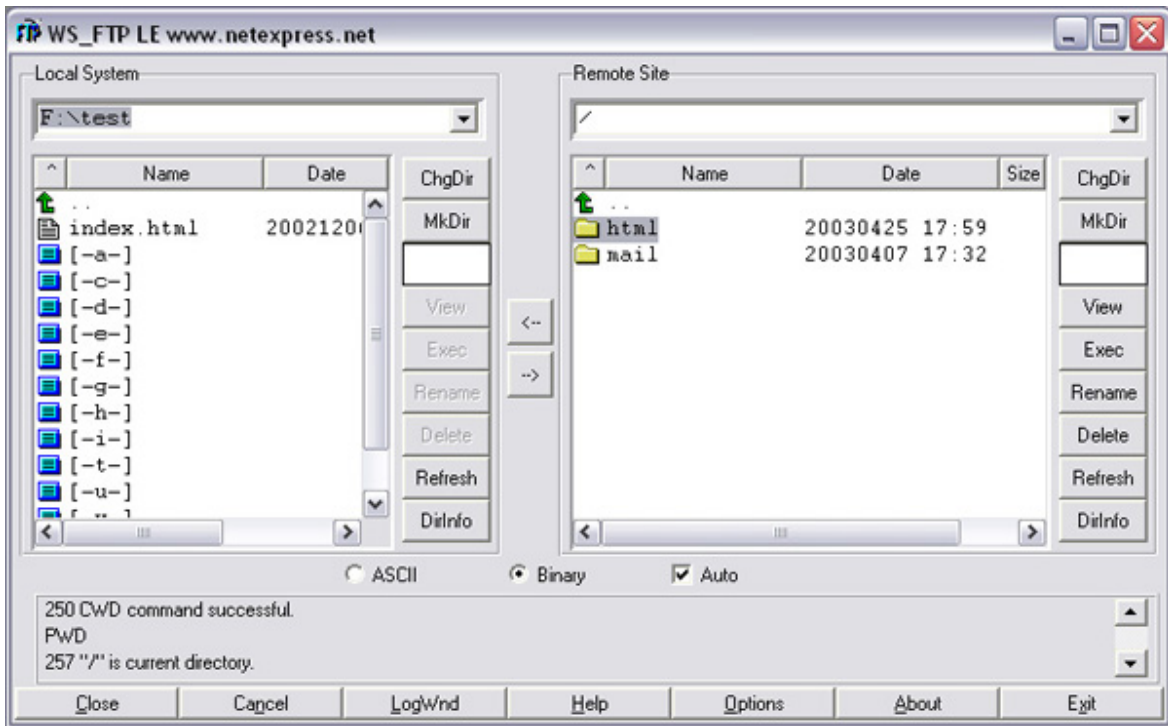
· *If you are unsure what type of server you are hosted on, consult your virtual hosting packet, [e-mail our support staff](#), or call our support staff at 309-736-8000 or 888-620-7873.*

**password:** *your password*



**If your site is hosted on our Linux servers, anything you want to be live on the web will need to go in the "html" folder. On any of our Windows servers, put any files you want to be live on the web in the root directory you are brought to when you log in with your ftp client.**

· *If you are unsure what type of server you are hosted on, consult your virtual hosting packet, [e-mail our support staff](#), or call our support staff at 309-736-8000 or 888-620-7873.*



**The main page of your website should be named** `index.php`, `index.asp`, `index.html`, or `index.htm`

